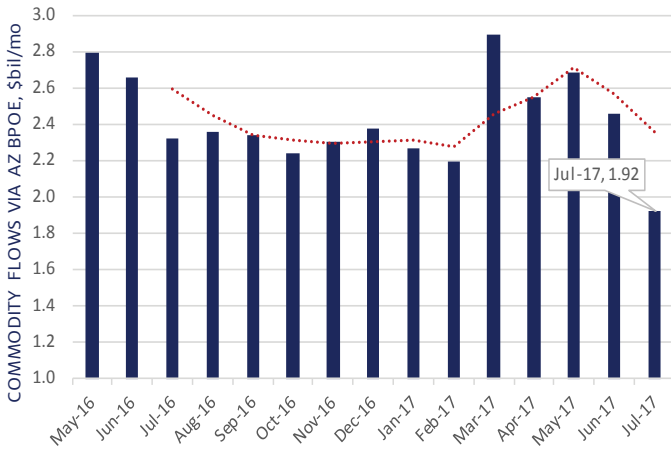


\$645 mil/mo
AZ EXPORTS TO MEXICO

the average \$ value for latest three months of data, May-July 2017, is **down 0.7%** from the previous three-month average, and is **11.1% less** than a year ago.

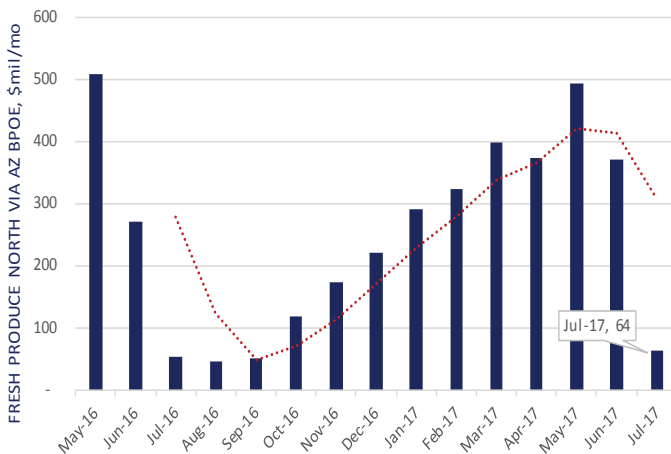
Arizona monthly exports to Mexico picked up substantially in March 2017 to reach \$730 mil/mo. While remaining strong, monthly levels drifted down in June (\$639 mil/mo) and July (\$615 mil/mo).



\$2.4 bil/mo
COMMODITY FLOWS TO MEXICO VIA AZ BPOE

the average \$ value for latest three months of data, May-July 2017, is **down 7.5%** from the previous three-month average, and is **9.1% less** than a year ago.

U.S. exports travelling south via Arizona BPOE picked up sharply in March reaching \$2.9 bil/mo. However, while this measure remained strong in April, May and June, it fell off sharply to \$1.9 bil/mo in July 2017, a billion dollar decline over 4 months.

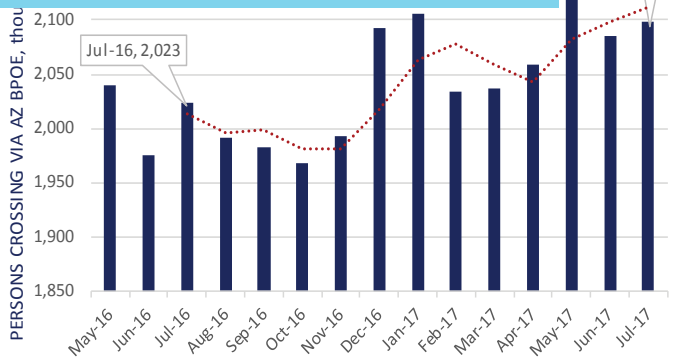


\$309 mil/mo
FRESH PRODUCE VIA AZ BPOE

the average \$ value for latest three months of data, May-July 2017, is **down 15.3%** from the previous three-mo. average, but is **up 11.3%** from the the same three months in 2016.

Fresh produce production is highly seasonal, as is the flow of fresh produce north.

The Bureau of Transportation Statistics has not released new data on border crossings since December 2016 figures were released. The border crossing numbers reported here were obtained from the Customs and Border Protection Tucson Field Office and may be considered preliminary.

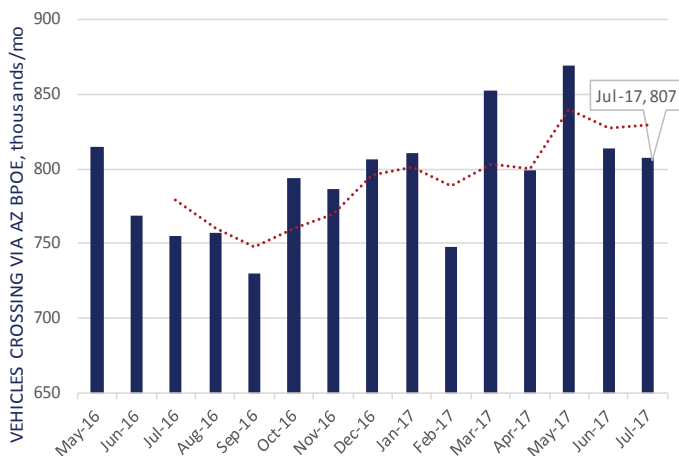


2.1 mil/mo

PERSONS CROSSING AZ BORDER NORTHBOUND

the average number for latest three months of data, May-July 2017, was **up 1.9%** over the previous three-month average, and is **3.7% higher** than a year ago.

Personal vehicle passengers comprise on average 70% of all crossers, 30% come on foot, and 1% by bus. Over the decade, 2006-2016, personal vehicle crossings at Nogales BPOE grew 5.9%.

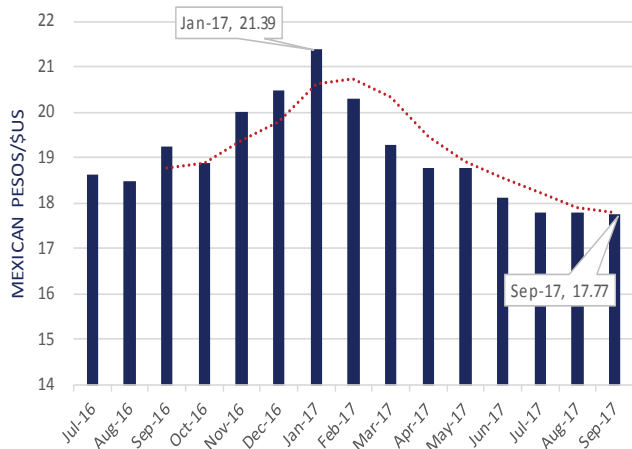


829,941/mo

VEHICLES CROSSING AZ BORDER NORTHBOUND

the average number for latest three months of data, May-July 2017, was **up 3.8%** over the previous three-month average, and **increased 6.4%** from a year ago.

Personal vehicles comprised 97% of all vehicle crossings, these crossings are up 6.9% from a year ago. Truck crossings were up 4.5% over the year in July 2017.



17.79 pesos/\$US

EXCHANGE RATE

the average exchange rate over the latest three months of data, July-September 2017, is a **4.1% gain** in value against the \$U.S. over the previous three-month average, and a **5.3% appreciation** from its value a year ago.

The Mexican peso's value measured against the US dollar stabilized the last 3 months at or near 17.8 pesos/\$US. Its dramatic decline, which began in December of 2014, reached an historic low of 21.39 pesos/\$US in January 2017.